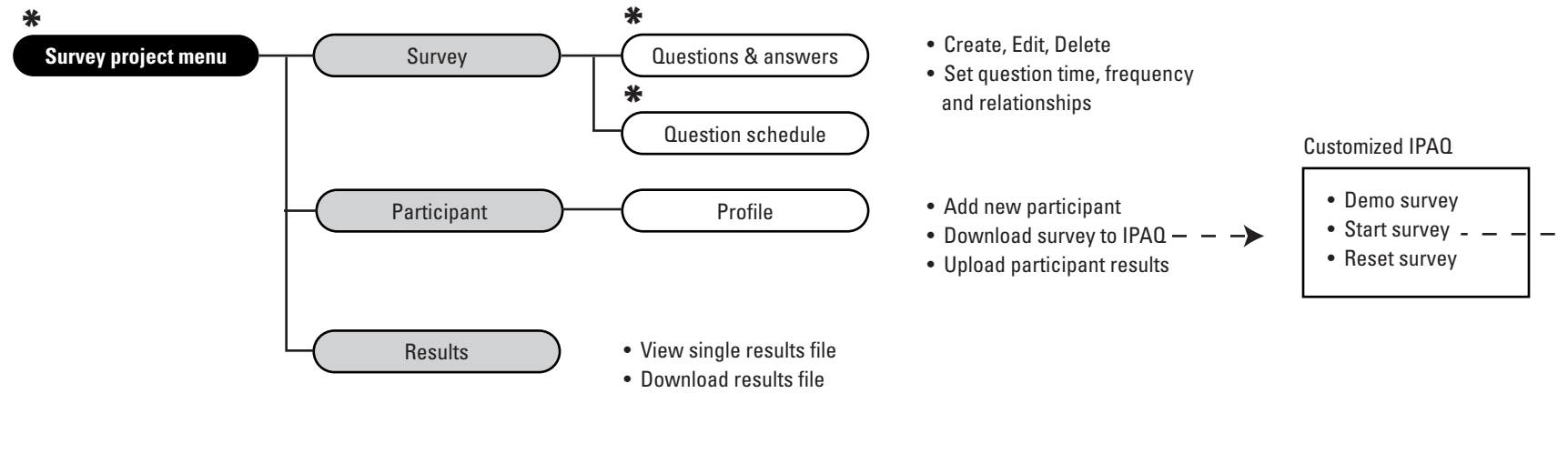
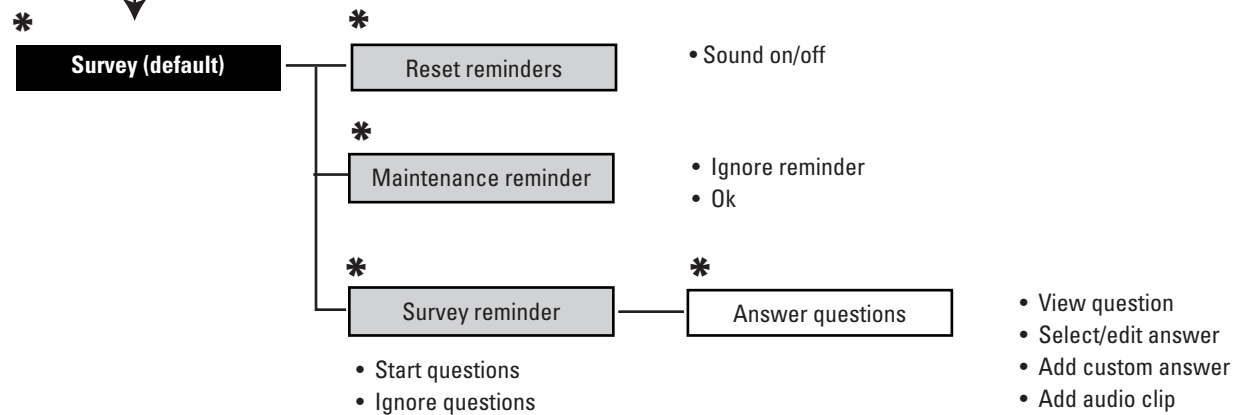


# Activity tool Organizational model

## Researcher view



## Survey participant view



### Key



# Activity tool Create survey - Set question schedule (on PC)

10/05/02, v1

### Survey project name

> Back to main menu

---

**Survey** > Question detail > All questions > **Question scheule**

---

> View by daily schedule > View by exact times > Clear schedule

---

Morning Questions appears:  Random  Every: 15 minutes ▼  At:  am ▼

---

Questions:

1. Q1 - Part of question.... ▼ > Set answer triggers
2. Q2 - Part of question.... ▼ > Set answer triggers
3. Q5 - Part of question.... ▼ > Set answer triggers
4. Q10 - Part of question.... ▼ > Set answer triggers

---

Mid day Questions appears:  Random

---

Questions:

1. Q1 - Part of question.... ▼
2. Q2 - Part of question.... ▼
3. Q5 - Part of question.... ▼
4. Q10 - Part of question.... ▼

First questions are entered, then the schedule is set.

## QUESTIONS

1. What are the min and max limits on answers?

### Set question triggers:

<input type="checkbox"/> A1.1 - Part of answer...	If answer is	selected ▼	show:	Q1 - Part of question.... ▼
<input type="checkbox"/> A1.2 - Part of answer...	If answer is	selected ▼	show:	Q1 - Part of question.... ▼
<input type="checkbox"/> A1.3 - Part of answer...	If answer is	selected ▼	show:	Q1 - Part of question.... ▼
<input type="checkbox"/> A1.4 - Part of answer...	If answer is	selected ▼	show:	Q1 - Part of question.... ▼

> Done > Cancel

Pop-up

Screen state: Empty schedule with pop-up

**1. Question.....**

- Answer...
- Answer...
- Answer...
- Answer...
- Other

> Keyboard > Audio

---

> Next

Screen state: First question

**3. Question.....**

- Answer...
- Answer...
- Answer...
- Answer...
- Other

<Note, entered by keyboard.>

> Keyboard > Audio

---

> Done

Screen state: Last question

Questions appear sequentially. Once the participant goes to the next question, they can not go back and change an earlier question.

When 'Done' is selected, the default screen appears.